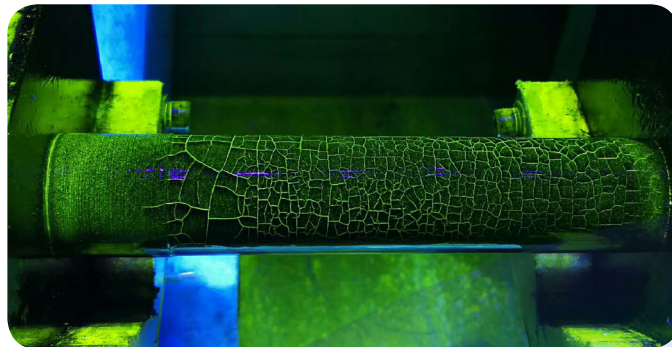
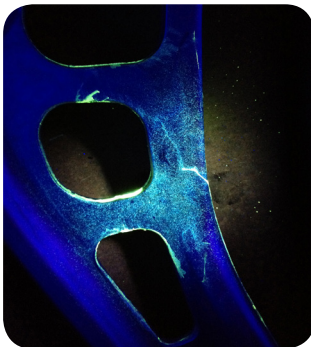


UV Inspection Lamp Range



Vista

The hand-held Vista UV LED lamp has a white light and UV light function, as per ASTM E3022. As with all our lamps the Vista series is equipped with a UV Filter.

The Vista carries a 12.8 Mega-Pixel HD Camera with UV filter and is ideal for capturing images or video of inspections, enhancing data and reporting capabilities. The “intelligent” operation system is Android 4.4 based and data can be transmitted via Bluetooth, built-in Wi-Fi or Micro-USB.

The **VISTA 45-C** has 3 UV LEDs and a white light LED and an interchangeable lens.

The **VISTA Series** of UV LED Lamps can be powered both by mains or batteries; where applicable a battery life indicator will warn the operator when power is low in order to maintain smooth operations.

Models in the Vista range are compliant with ASTM E3022, E1417 ANSI/ NCSL Z540-1-1994 and Rolls Royce: RRES 90061.



Android Based O/S



Changeable Lens



Zooming Function

Opus

The Opus is a mains only, LED UV lamp featuring 4 powerful UV-A (365nm) LEDs, plus a convenient white light LED to quickly switch between fluorescent inspection and flaw location. Designed for NDT applications to aid the visual inspection and identification of cracks, inclusions and surface defects, the Opus lamp is also extremely useful in identifying effective rinsing during the NDT inspection rinse process.



The LEDs generate a UV light with a wavelength between 365 to 370nm and peak radiation at approximately 365nm. This corresponds to UV radiation in the so-called UV-A range. A unique mechanical cooling system keeps LEDs cool to maintain optimum light output during extended use.

The standard model **OPUS-S** is compliant with ASTM E2297, E3022, E1444, E1417 and ISO 3059.

The aerospace model, **OPUS-A**, is also compliant with Rolls Royce RRES 90061 and Airbus AITM6-1001.

Iris

The Iris series of portable LED UV inspection lamps feature 3 powerful UV-A (365 nm) LEDs, plus a convenient white light LED to switch between fluorescent inspection and flaw location quickly. The smooth, large beam of this hand-held UV lamp makes it a useful tool whether in the field or on a bench. All lamps are equipped with black light filters.



The Iris models have adjustable light intensity, temperature monitoring, a laser pointer function, and are housed in a rugged enclosure, powered by either mains or battery. A 100% solid state circuit ensures working properly in strong magnetic field.

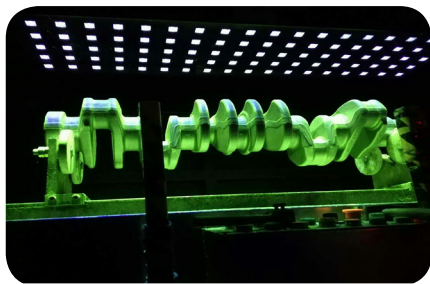
The standard model **IRIS-S** is compliant with ASTM E2297, E3022, E1444, E1417 and ISO 3059. The aerospace model, **IRIS 4500**, is compliant with those above plus Rolls Royce RRES 90061 and Airbus AITM6-1001.

Apollo (365L/365XL)

Apollo 365L overhead panel utilizes the state-of-art LED technology and makes it a great tool for fluorescent MT, PT and leak detection.

Constructed from aviation grade aluminium alloy, Apollo 365 series LED UV panel is a rugged unit and will endure the harshest working conditions; with excellent cooling ability and is dust-proof. A waterproof protective case can also be added to the system.

The unique feature of Apollo 365 series LED UV panel is its module-based design. Each LED of Apollo 365 is encapsulated as an independent unit and are interchangeable, between "flood" and "spot" for example, so you can create your preferred overhead light configuration with the desired UV intensity and coverage area.



The standard Apollo 365L is 400mm long and consists of 8 UV LEDs and 2 white LEDs, which ensures high UV intensity and large coverage. The Apollo 365XL is 610mm long and carries 16 high performance UV LEDs and 4 white LEDs, which ensures high UV intensity and large coverage.

Model	LED Source	Adj. Intensity	Coverage Area
AP365-L	8 UV LEDs, 2 White light LED	2500-4500µw/cm2	480x500mm
AP365-XL	16 UV LEDs, 4 White light LED	4000-6500µw/cm2	730x520mm

Spirit

The Spirit series of UV lamps are compact and lightweight, with explosion proof certification (CE, RoHS, Ex). They offer a very narrow spectra, with a peak wavelength of 365nm, featuring four powerful UV-A (365 nm) LEDs, a convenient white light LED, providing a broad and even beam light source.



Spirit can provide a large coverage area of up to 160 mm, with a minimum UV-A intensity of 1200 µW/cm2. All lamps are equipped with black light filters.

Models in the Spirit range are compliant with ASTM E2297, E3022, E1444, E1417 and ISO 3059.

ST-30: 2 UV LEDs and 1 white light LED. Each UV LED is covered with a black light filter. There are battery and mains versions available.

The ST-30 is Rolls Royce RRES 90061 and Airbus AITM6 - 1001 approved.

ST-30BEX: is the certified explosion proof battery version of the Spirit.

Lumazon

The Lumazon is a handheld dual LED UV and White Light Inspection Lamp for Magnetic Particle and Dye Penetrant Inspection. Lightweight and compact the Lumazon easily switches between ultraviolet and white light.



LED technology extends the operating lifetime and enhances the light output. Efficiency gains are made due to instantaneous operation, no warm up time is required and financial savings are made from not needing frequent and expensive replacement bulbs.

Two switches and a trigger are used to operate the Lumazon. The trigger acts as the on / off switch and adjacent to this is a 'hold' switch used to maintain UV or white light output continuously. The second switch selects UV or White Light output.

The **Lumazon-RR** meets the ASTM E3022 and Rolls Royce RRES 90061 specifications

MPI Accessories

LumaFlux

COMBINED DUAL UV & WHITE LIGHT AND TANGENTIAL FIELD STRENGTH METER
Two instruments in one allowing you to save on purchase and calibration costs.



The **LumaFlux**, is a combined Dual UV / White Light Meter and Tangential Field Strength Meter and is a truly innovative NDT product, first in its field. With an easy “Swap & Go” system to change Sensors, the LumaFlux rapidly switches between all the established functions of the LumaCheck dual UV & white light meter and the unique benefits of the MagnaCheck 3D, a tangential field strength meter. The LumaFlux automatically recognises the sensor that is connected meaning that the unit operates in the selected mode until the sensors are swapped.

The LumaCheck has been adopted by many of the worlds’ major NDT users over recent years and offers precise measurement of UV and White Light intensity. The LumaCheck has already proven to be extremely rugged and durable in field use with extremely low “lifetime cost of ownership”.

The good news is that the LumaFlux has the same robust enclosure and sensors as the two predecessor products and, of course, all the same benefits in measurement accuracy and efficiency. However, the LumaFlux is available at a price that is approximately 15% less than purchasing two separate meters. Not only is there a saving in capital cost, but the calibration costs for the LumaFlux will also typically prove to be significantly cheaper than calibrating two separate meters.

The **LumaFlux Kit** includes the LumaFlux Instrument, Dual UV & White Light Sensor, 3D Tangential Field Strength Probe, Probe Lead, Metal Null Pot and quality carry case.

- Excellent accuracy and results in all measurement modes.
- Lightweight, compact, housed in a rugged enclosure.
- Battery powered.
- Ergonomically designed partnered with a protective rubber boot.
- Full colour programmable display.
- Programmable calibration reminder.
- Separate probes and separate cable for convenience and lower spares and maintenance costs.
- Extremely stable between calibration intervals.

Distributed by:

